

Site Infrastructure Database

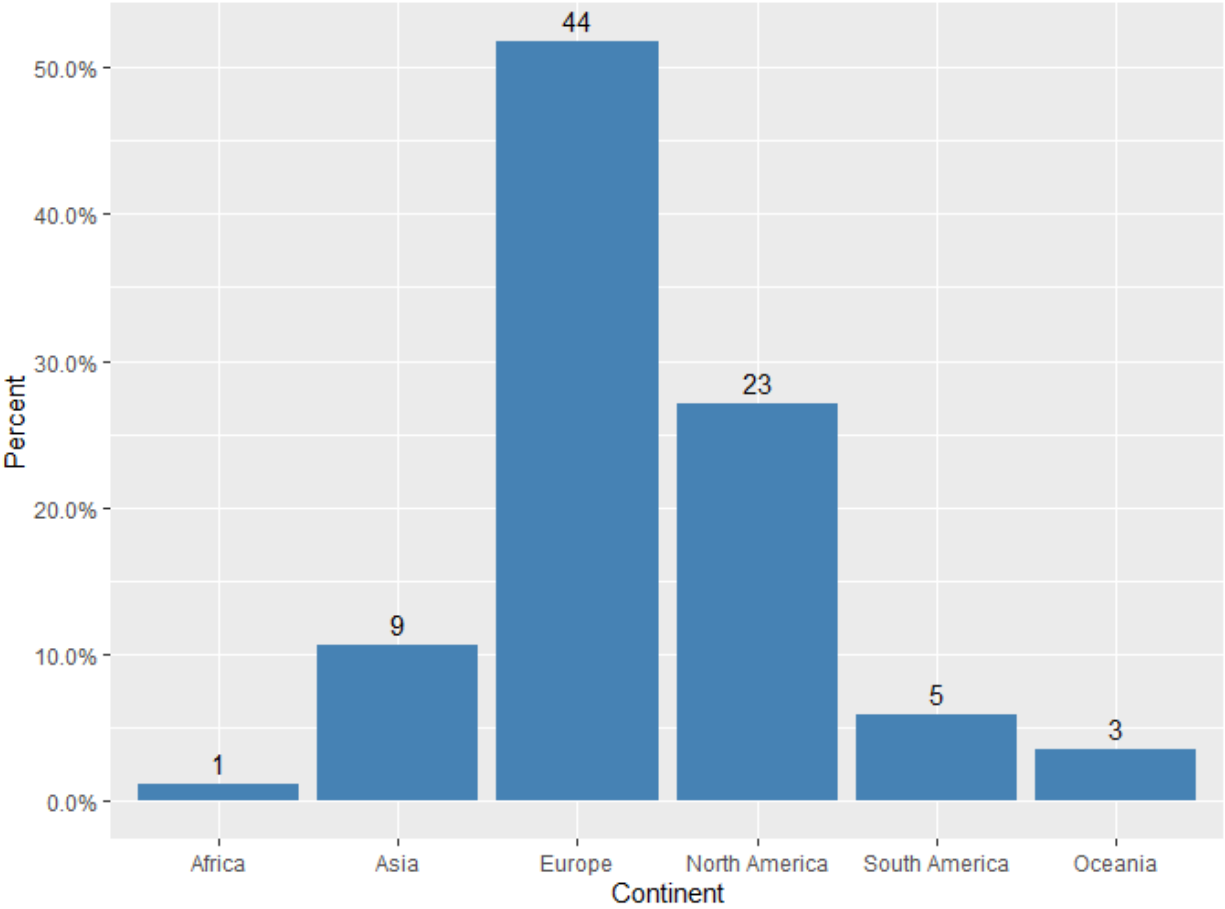
The SCTC Site Infrastructure Database captures information on the patient characteristics, available resources and infrastructure, as well as practice patterns in the SCTC and EUSTAR centers. Sixty data elements are captured and regularly updated in this database.

The database has been updated four times so far (Feb 2019, Dec 2019, Oct 2021, and Oct 2022). It currently includes data from 138 centers.

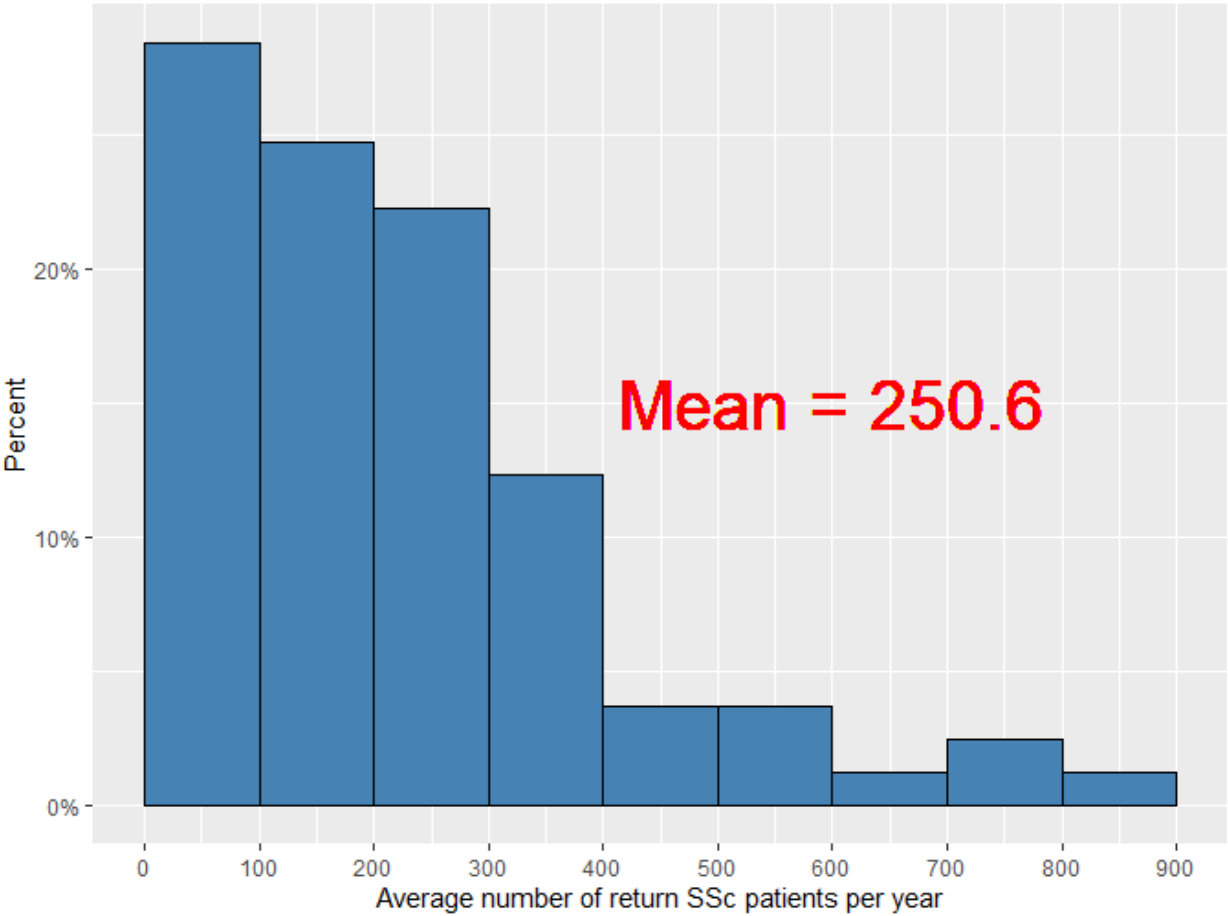
The site-level information captured in this database can be shared with the pharmaceutical companies or academic centers for the design and feasibility assessment when planning large-scale, international clinical trials.

These are some examples on the type of information included in the database.

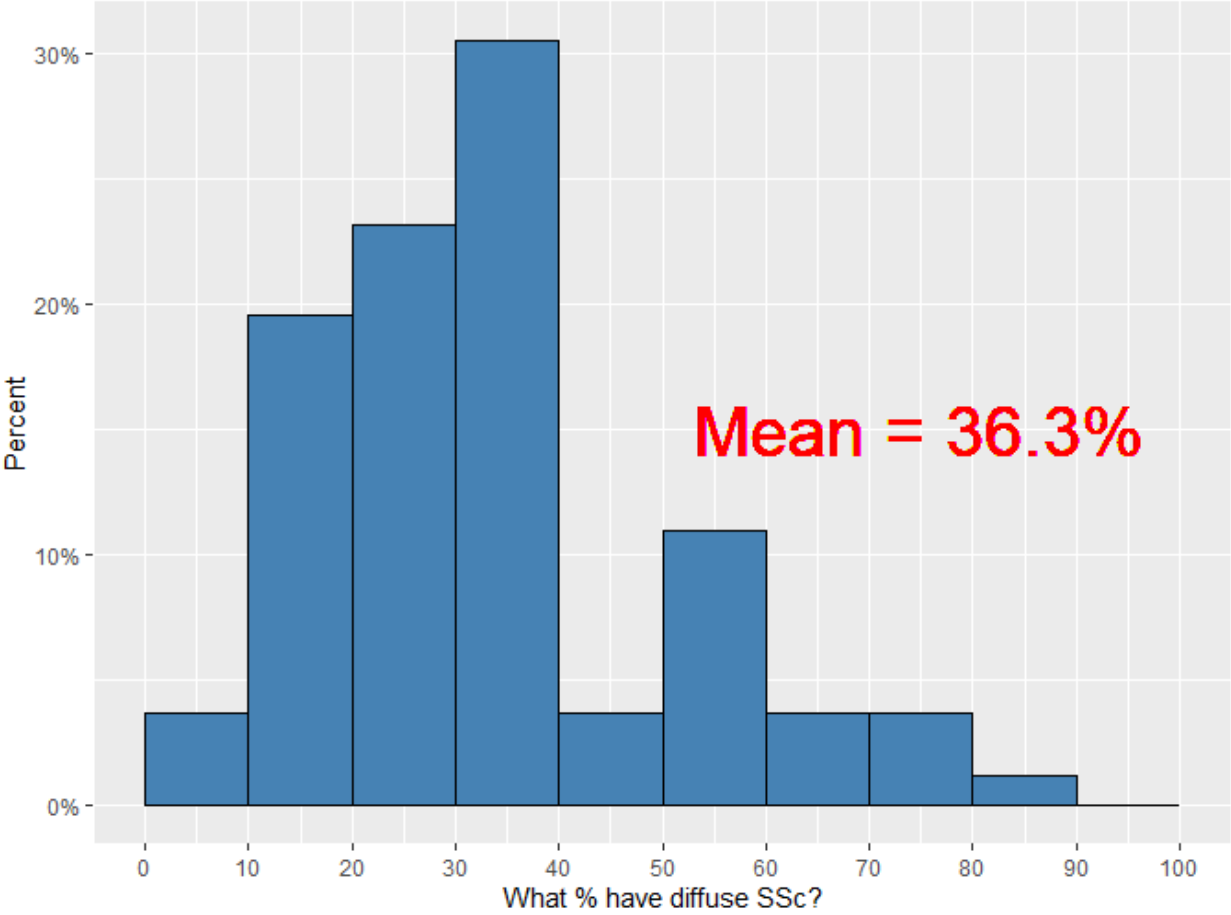
Geographic distribution of centers that updated their records in October 2022:



Average number of returning SSc patients per year:



What percentage of the patients have diffuse systemic sclerosis?



Preferred treatment for SSc-ILD based on October 2022 update:

1 st preferred therapy for ILD	N=85 ¹
Mycophenolate	57 (71%)
Cyclophosphamide	15 (19%)
Nintedanib	2 (2.5%)
Rituximab	2 (2.5%)
Azathioprine	1 (1.2%)
Methotrexate	1 (1.2%)
Tocilizumab	1 (1.2%)
Other	1 (1.2%)
Unknown	5
¹ n (%)	

2 nd preferred therapy for ILD	N=85 ¹
Cyclophosphamide	25 (31%)
Mycophenolate	17 (21%)
Nintedanib	14 (18%)
Tocilizumab	13 (16%)
Rituximab	6 (7.5%)
Azathioprine	2 (2.5%)
Methotrexate	2 (2.5%)
Prednisone	1 (1.2%)
Unknown	5
¹ n (%)	